

CoroCut® QI

Optimized for internal grooving and
face grooving

Reliable grooving on small diameters

Machining grooves on smaller diameters just got more reliable thanks to CoroCut® QI. Featuring a rail insert seat, the tool ensures insert stability that provides cost-efficient and stable machining of internal grooves and face grooves.

Thanks to a light cutting action and inserts with high edge-line quality, the CoroCut® QI delivers high surface-quality grooves with superior process security.

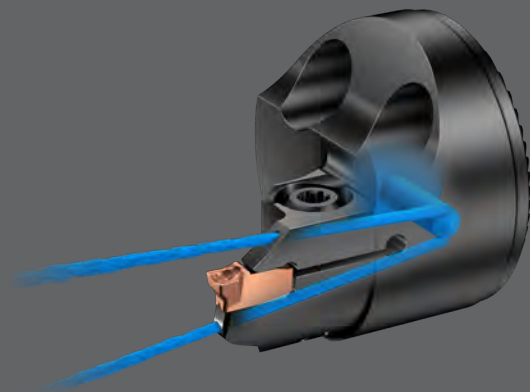
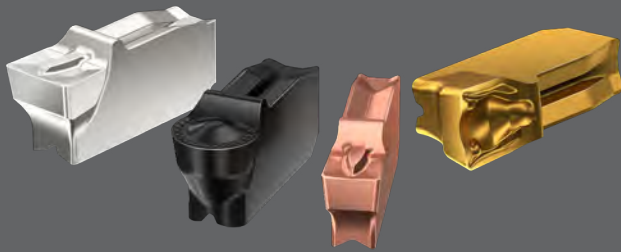
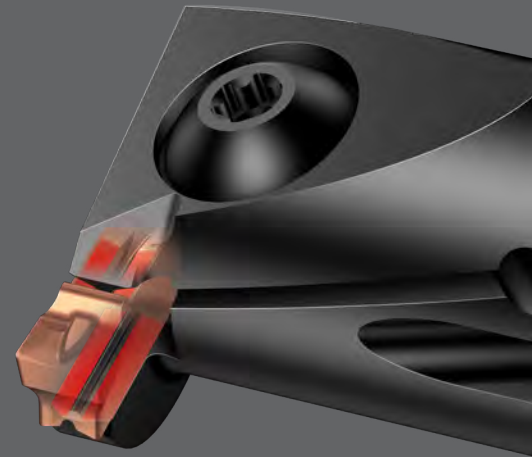
CONTACT YOUR

Local Thomas Skinner Representative
for more information:
1-800-567-2131 • tss@tskinner.com



Features and benefits

- Rail insert seat for a stable and precise insert position
- Optimized tip seat angle enables a lighter cutting action and reduced cutting forces
- Screw-clamped tool holders ensure stability and high process security
- Internal coolant improves chip evacuation and increases productivity
- Inserts with high edge-line quality increase tool life and surface quality



Application

Internal grooving

- Minimum hole diameter (DMIN): 12–60 mm (0.472–2.36 inch)
- Cutting depth (CDX): 2–11 mm (0.079–0.433 inch)

Face grooving

- First cut diameter (DAXIN-DAXX): 16–102 mm (0.630–4.02 inch)
- Cutting depth (CDX): 5.5–20 mm (0.217–0.787 inch)



ISO application areas

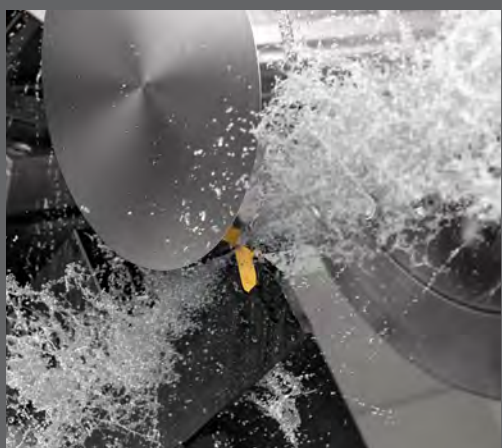
High-performance parting and grooving tools

The CoroCut® QI, together with the CoroCut® QD and CoroCut® QF, completes the platform of optimized high-performance tools for parting and grooving applications.



CoroCut® QI

Optimized for internal grooving and face grooving applications.



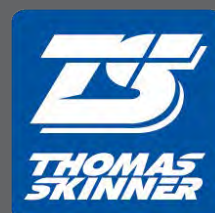
CoroCut® QD

Optimized for deep external grooving and parting off applications.



CoroCut® QF

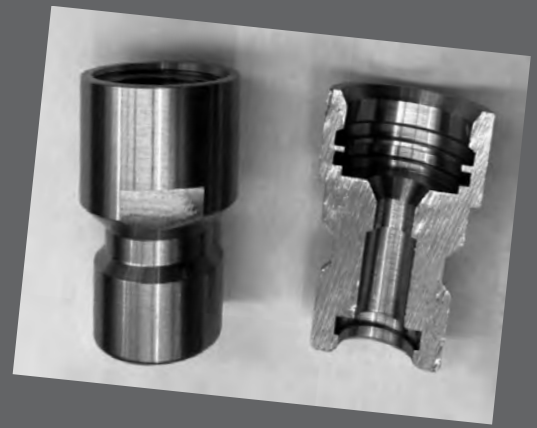
Optimized for deep face grooving applications.



Performance case

Competitor vs. CoroCut® QI

Component: Body
Material: M1.2.Z.AQ (Aisi 303)
Operation: Internal grooving
Machine: Citizen M32



	Competitor	CoroCut® QI
Tool	Carbide bar	QI-RAGE02C16-12
Insert	-	QI-NE-0200-0002-GF 1125
v_c m/min (ft/min)	135–160 (443–525) (constant rpm)	135–160 (443–525) (constant rpm)
f_n mm/rev (in/rev)	0.05 (0.002)	0.07 (0.003)
Time, sec	70	65
Tool life, pcs	3000	7000

Result: The reason for changing the competitor tool was poor surface finish. The CoroCut® QI provided a secure and reliable process with an excellent surface finish as well as higher productivity.



For more information, contact your local Sandvik Coromant representative or visit www.sandvik.coromant.com

CONTACT YOUR

Local Thomas Skinner Representative
for more information:
1-800-567-2131 • tss@tskinner.com

